

FACULTY OF BIO-TECHNOLOGY

Where Biology Meets Technology!

I ACADEMIC PROGRAM



Course: B. Tech. Bio-Technology

Duration: 4 Years (8 Semesters) Professional Degree



University Network:



MPKV, Rahuri | PDKV, Akola | VNMKV, Parbhani | BSKKV, Dapoli

College Statistics:

Government Colleges

02

12

Non-Grant (On Permanent Basis) Colleges:

I QUALIFYING EXAMINATIONS (XII STD)

XII Std. (Science) passed in 10+2 pattern from Maharashtra State Board or equivalent with PCB/PCMB/PCM or Inter (Agri) and English.

- **Mandatory:** English pass.
- Deficiency courses possible for Biology or Math.

II ENTRANCE REQUIREMENT



Must appear for MHT-CET / JEE / NEET organized by the Competent Authority during 2026-27 in PCB or PCM groups.

3 MAJOR AREAS OF STUDY



Plant Biotechnology & Tissue Culture



Microbial & Environmental Biotechnology



Bioinformatics & Genomics



Animal Biotechnology & Molecular Diagnostics

4 ADMISSION CRITERIA & MARKS



General Category
45% Aggregate in HSC



Reserved Categories
40% Aggregate in Reserved



Merit Calculation
Based on Entrance Exam Scores + weightage (7/12, NCC, Sports, etc.)

5 CAREER OPPORTUNITIES



R&D: Scientist in Vaccine/Seed production (Biocon, Serum Institute)



Healthcare
Genetic Engineering and Bio-pharma sectors



Government
Quality Control Officer, ICAR Research Assistant



Startups
Forensic Science and Tissue Culture Labs

CONTACT & REGISTRATION

Admission Portal: cetcell.mahacet.org



Please scan QR for the Admission Portal.

FACULTY OF AGRICULTURE BUSINESS MANAGEMENT

Shaping Future Agri-Entrepreneurs & Agribusiness Leaders!

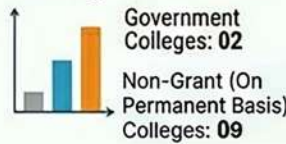
1. ACADEMIC PROGRAM

Course: B.Sc. (Agriculture Business Management)
Duration: 4 Years (8 Semesters) Professional Degree

University Network



College Statistics



2. QUALIFYING EXAMINATIONS

I. XII Std.

- XII Std. (Science) passed with PCM, PCMB, or PCB and English.
- Deficiency courses possible. English compulsory.



II. Entrance Requirement

MHT-CET / JEE / NEET in 2026-27 (PCB or PCM group)

3. MAJOR AREAS OF STUDY

Agribusiness Management Marketing, supply chain & agri-trade	Farm Management Cost analysis, farm planning & finance	Agri-Entrepreneurship Startups, agritech ventures & innovation
Agri-Finance & Banking Rural banking, microfinance	Agri-Marketing & Export Commodity trading, APMC, global markets	ICT in Agriculture Digital agriculture, e-NAM, agri platforms

Other Courses: Horticulture, Animal Husbandry, and Engineering.

4. ADMISSION CRITERIA & MARKS*

General Category Minimum 45% aggregate in HSC	Reserved Categories Minimum 40% aggregate.	Merit Calculation Based on Entrance Exam scores + weightage (7/12, NCC, Sports, etc.)
---	--	---

5. CAREER OPPORTUNITIES

Government Sector Agriculture Officer, APMC, Banking	Corporate Sector Seed, Fertilizer, Food	Finance & Banking NABARD, Agri Banks, Insurance	Entrepreneurship Agri Startups, Export, Processing	Higher Education MBA (Agri-Business), M.Sc., PGDM
--	---	---	--	---

CONTACT & REGISTRATION

Admission Portal: <https://cetcell.mahacet.org>



Please scan this for the Admission Portal.

FACULTY OF AGRICULTURAL ENGINEERING

Engineering the Future of Mechanized Farming!

1. ACADEMIC PROGRAM

Course: B.Tech. (Agricultural Engineering)

Duration: 4 Years (8 Semesters) Professional Degree

University Network



College Statistics



2. QUALIFYING EXAMINATIONS

I. XII Std. (Science)

- XII Std. (Science) passed (10+2) with PCM or PCMB and English.
- Math deficiency courses possible for non-Biology, except Agri. Engg.

II. Entrance Requirement

MHT-CET / JEE in 2026-27 in PCM group (Physics, Chemistry, Maths).

3. MAJOR AREAS OF STUDY

<p>Farm Machinery & Power: Design and maintenance of tractors and farm equipment.</p>	<p>Irrigation & Drainage: Micro-irrigation and water management.</p>
<p>Soil & Water Conservation: Watershed management and erosion control.</p>	<p>Renewable Energy: Solar, wind, and bio-energy.</p>
<p>Agricultural Process Engg. Post-harvest technology and food processing.</p>	

4. ADMISSION CRITERIA & MARKS

General Category	Reserved Categories	Merit Calculation
 Minimum 45% aggregate	(SC/ST/VJ/NT/OBC/SBC) Minimum 40% aggregate	Based on Entrance Exam (PCM) scores + Additional Weightage (7/12, NCC, Sports, etc.)

5. CAREER OPPORTUNITIES

<p>Government Agricultural Engineer, Soil Conservation Officer</p>	<p>Corporate R&D and Production in Tractor, Tool, and Irrigation companies</p>	<p>Consultancy Design of high-tech polyhouses and automation systems</p>	<p>Entrepreneurship Farm service centers and agro-processing units</p>
---	---	---	---

CONTACT & REGISTRATION

Admission Portal: cetcell.mahacet.org



FACULTY OF FISHERIES

Sustainable Blue Revolution!

1. ACADEMIC PROGRAM

Course: B.F. Sc. (Fishery Science)

Duration: 4 Years (8 Semesters) Professional Degree

University Network



DBSKKV, Dapoli

College Statistics



2. QUALIFYING EXAMINATIONS



I. XII Std. (Science)

- XII Std. (Science) passed (10+2) with PCB/PCMB/Inter (Agri).
- Math deficiency courses possible.
- Passed with English.



II. Entrance Requirement

MHT-CET / NEET in 2026-27 (PCB only)

3. MAJOR AREAS OF STUDY

Aquaculture and Fish Farming

Fish Genetics & Biotechnology

Fish Nutrition and Feed Technology

Aquatic Animal Health Management

Fish Processing Technology

Fisheries Extension, Economics & Statistics
Aquatic Environment Management

4. ADMISSION CRITERIA & MARKS

General Category



Minimum 45% aggregate

Reserved Categories

(SC/ST/VJ/NT/OBC/SBC)

Minimum 40% aggregate

Merit Calculation

Based on Entrance Exam (PCB) scores + Additional Weightage (7/12, NCC, Sports, etc.)

5. CAREER OPPORTUNITIES



Government
(FDO, ACF)



Corporate
Modern seafood processing plant



Consultancy & Entrepreneurship



Banking
Field officer

CONTACT & REGISTRATION

Admission Portal: cetcell.mahacet.org



Please scan this for the Admission Portal.

FACULTY OF AGRICULTURE

Shape the Future of Sustainable Farming!

1. ACADEMIC PROGRAM

Course: B.Sc. (Honours) Agriculture

Duration: 4 Years (8 Semesters) Professional Degree

University Network



MPKV, Rahuri | PDKV, Akola | VNMKV, Parbhani | BSKKV, Dapoli

College Statistics



Government /
Aided Colleges:
25



Non-Grant (On
Permanent Basis)
Colleges: 91



2. QUALIFYING EXAMINATIONS



I. XII Std. (Science)

Passed in 10+2 pattern from Maharashtra State Board with PCB/PCMB/PCM or Inter (Agriculture). Must have English. Biology/Math deficiency courses possible.



II. Entrance Requirement

Must appear for MHT-CET / JEE / NEET in 2026-27 in PCB or PCM groups.

3. MAJOR AREAS OF STUDY

- Agronomy:** Crop Production & Soil Management
- Genetics:** Plant Breeding & Biotechnology
- Plant Protection:** Entomology & Plant Pathology
- Social Sciences:** Agricultural Economics & Extension Education
- Allied Sciences:** Horticulture, Animal Husbandry, Engineering

4. ADMISSION CRITERIA & MARKS

General Category	Reserved Categories (SC/ST/VJ/NT/OBC/SBC)	Merit Calculation
Minimum 45% aggregate	Minimum 40% aggregate	Entrance Exam scores + Additional Weightage (7/12, NCC, Sports, etc.)

5. CAREER OPPORTUNITIES



Government
Agriculture Officer (MPSC/UPSC), AO, AAO



Banking
Agriculture Field Officer (AFO) in Nationalized Banks



Industry
R&D and Sales in Seed, Fertilizer, Pesticide



Entrepreneurship
Agri-Clinics, Organic Farming, Tech-Startups

CONTACT & REGISTRATION

Admission Portal: cetcell.mahacet.org



Please scan this for the Admission Portal.

FACULTY OF FORESTRY

Conserve Nature, Engineer a Greener Future!

1. ACADEMIC PROGRAM

Course: B.Sc. (Honours) Forestry

Duration: 4 Years (8 Semesters) Professional Degree

University Network



PDKV (Akola)



DBSKKV (Dapoli)

College Statistics



2. QUALIFYING EXAMINATIONS



I. XII Std. (Science)

- XII Std. (Science) passed (10+2) with PCB/PCMB/Inter (Agri).
- Math deficiency courses possible.
- Passed with English.



II. Entrance Requirement

MHT-CET / NEET in 2026-27 (PCB only)

3. MAJOR AREAS OF STUDY



Silviculture

Forest establishment, health management.



Forest Biology

Wildlife management, tree genetics



Forest Products

Wood science, timber technology



Natural Resource Management

Watershed, biodiversity

4. ADMISSION CRITERIA & MARKS

General Category



Minimum 45% aggregate

Reserved Categories



Minimum 40% aggregate

Merit Calculation

Entrance Exam scores + Additional Weightage (7/12, NCC, Sports, etc.)

5. CAREER OPPORTUNITIES



State Services (RFO/ACF)
RFO, ACF (MPSC)



Research
Wildlife Biologist, Forestry Scientist



Industrial (Wood-based)
Wood-based (Paper, Plywood)



Plantations
Rubber, Tea

CONTACT & REGISTRATION

Admission Portal: cetcell.mahacet.org



Please scan this for the Admission Portal.

FACULTY OF FOOD TECHNOLOGY

Transforming Food Through Technology!



I ACADEMIC PROGRAM



Course: B. tech (Food Technology)
Duration: 4 Years (8 Semesters) Professional Degree



University Network:



MPKV, Rahuri | PDKV, Akola | VNMKV, Parbhani | BSKKV, Dapoli

College Statistics: Government/Aided: 03 | Non Grant (On Permanent Basis) Colleges: 20

I QUALIFYING EXAMINATIONS (XII STD)



Passed XII Std. (Science) in 10+2 pattern from Maharashtra State Board or equivalent with PCB/PCMB/PCM or Inter (Agri) and English.



- **Mandatory:** English pass.
- Deficiency courses possible for Biology or Math.

II ENTRANCE REQUIREMENT



Must appear for MHT-CET / JEE / NEET in 2026-27 in PCB or PCM groups.

3 MAJOR AREAS OF STUDY



• Food Process Technology.



• Food Chemistry and Nutrition.



• Food Business Management.



• Food Plant Operation.



• Food Microbiology and Safety.



• Food Engineering.

4 ADMISSION CRITERIA & MARKS



General Category
Minimum 45% aggregate



Reserved Categories
(SC/ST/VJ/NT/OBC/SBC)
Minimum 40% aggregate



Merit Calculation
Entrance Exam scores +
Additional Weightage
(7/12, NCC, Sports, etc.)

5 CAREER OPPORTUNITIES



Food and Allied Industry.



State/Central Government
(FSSAI, NABARD, etc.)



Research and Development
(CFTRI, ICAR, etc.)



Teaching and Academic
(NIFTM, ICT, etc.)

CONTACT & REGISTRATION

Admission Portal: cetcell.mahacet.org



Please scan this for the Admission Portal.

FACULTY OF COMMUNITY SCIENCE

Science for Society, Science with Purpose!




I ACADEMIC PROGRAM



Course: B. Sc. (Honors) Community Science
Duration: 4 Years (8 Semesters) Professional Degree



University Network: 
College Statistics: VNMKV, Parbhani

Government Colleges: 01

I QUALIFYING EXAMINATIONS (XII STD)



Passed XII Std. (Science) in 10+2 pattern from Maharashtra State Board or equivalent with PCB/PCMB/PCM or Inter (Agri) and English.

- **Mandatory:** English pass.
- Deficiency courses possible for Biology or Math.

II ENTRANCE REQUIREMENT



Must appear for MHT-CET / JEE / NEET organized by the Competent Authority during 2026-27 in PCB or PCM groups.

3 MAJOR AREAS OF STUDY



Food Science & Nutrition
 Therapeutic nutrition, preservation, community health



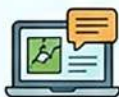
Human Development
 Child psychology, family relations, geriatric care



Resource Management
 Interior design, consumer economics, sustainable living



Textiles & Apparel Designing
 Fiber science, fashion merchandising, garment production



Extension Education
 Rural development, communication technologies

4 ADMISSION CRITERIA & MARKS



General Category
 Minimum 45% aggregate



Reserved Categories (SC/ST/VJ/NT/OBC/SBC)
 Minimum 40% aggregate



Merit Calculation
 Based on Entrance Exam scores + Additional Weightage (7/12, NCC, Sports, etc.)

5 CAREER OPPORTUNITIES



Healthcare
 Nutritionist/Dietician in hospitals, wellness centers, sports academies



Industry
 Quality Control in Food & Textile industries; Product Designer



Public Sector
 Child Development Project Officer (CDPO), Food Safety Officer



Development
 Program Officers in NGOs (ONICE7, CARE) and Rural Extension



Entrepreneurship
 Fashion boutiques, Interior consultancy, specialized catering units

CONTACT & REGISTRATION

Admission Portal: cetcell.mahacet.org



Please scan this for the Admission Portal.

FACULTY OF HORTICULTURE

Expertise in Fruits, Flowers, and High-Value Crops!

1 ACADEMIC PROGRAM



Course: B.Sc. (Honours) Horticulture
Duration: 4 Years (8 Semesters) Professional Degree

University Network:



MPKV,
Rahuri



PDKV,
Akola

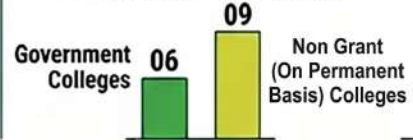


VNMKV,
Parbhani



BSKKV,
Dapoli

College Statistics:



2 QUALIFYING EXAMINATIONS (XII STD)

XII Std. (Science) passed in 10+2 pattern from Maharashtra State Board or equivalent with PCB/PCMB/PCM or Inter (Agri) and English.

- **Mandatory:** English pass.
- Deficiency courses possible for Biology or Math.

II. ENTRANCE REQUIREMENT



Must appear for MHT-CET / JEE / NEET in 2026-27 organized by the Competent Authority in PCB or PCM groups.

3 MAJOR AREAS OF STUDY



Fruit Science (Pomology)

High-tech production



Floriculture & Landscaping

Commercial farming & design



Vegetable Science

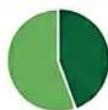
Olericulture & greenhouse



Post-Harvest Management

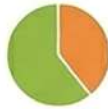
Value addition & preservation

4 ADMISSION CRITERIA & MARKS



General Category

45% aggregate in HSC



Reserved Categories

40% aggregate in Reserved



Merit Calculation

Entrance Exam scores +
Additional Weightage
(7/12, NCC, Sports, etc.)

5 CAREER OPPORTUNITIES



Public Sector

Horticulture Officer,
District H.O.



Private Sector

Production Manager,
Export houses



Entrepreneurship

Commercial Nurseries,
Landscape Consultancy,
Tissue Culture Labs



Higher Education

M.Sc. Horticulture,
MBA, PhD.

CONTACT & REGISTRATION

Admission Portal: cetcell.mahacet.org



Please scan this for the Admission Portal.