

# FACULTY OF AGRICULTURE BUSINESS MANAGEMENT

## Shaping Future Agri-Entrepreneurs & Agribusiness Leaders!



### 1. ACADEMIC PROGRAM

**Course:** B.Sc. (Agriculture Business Management)  
**Duration:** 4 Years (8 Semesters) Professional Degree

#### University Network



Mahatma Phule Krishi Vidyapeeth, Rahuri

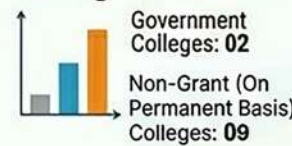


Dr. Panjabrao Deshmukh Krishi Vidyapeeth, Akola



Vasantrao Naik Marathwada Krishi Vidyapeeth, Parbhani

#### College Statistics



### 2. QUALIFYING EXAMINATIONS



#### I. XII Std.

- XII Std. (Science) passed with PCM, PCMB, or PCB and English.
- Deficiency courses possible. English compulsory.



#### II. Entrance Requirement

MHT-CET / JEE / NEET in 2026-27 (PCB or PCM group)

### 3. MAJOR AREAS OF STUDY



#### Agribusiness Management

Marketing, supply chain & agri-trade



#### Farm Management

Cost analysis, farm planning & finance



#### Agri-Entrepreneurship

Startups, agritech ventures & innovation



#### Agri-Finance & Banking

Rural banking, microfinance



#### Agri-Marketing & Export

Commodity trading, APMC, global markets



#### ICT in Agriculture

Digital agriculture, e-NAM, agri platforms

**Other Courses:** Horticulture, Animal Husbandry, and Engineering.

### 4. ADMISSION CRITERIA & MARKS\*

#### General Category



Minimum 45% aggregate in HSC

#### Reserved Categories



Minimum 40% aggregate.

#### Merit Calculation

Based on Entrance Exam scores + weightage (7/12, NCC, Sports, etc.)

### 5. CAREER OPPORTUNITIES



**Government Sector**  
Agriculture Officer, APMC, Banking



**Corporate Sector**  
Seed, Fertilizer, Food



**Finance & Banking**  
NABARD, Agri Banks, Insurance



**Entrepreneurship**  
Agri Startups, Export, Processing



**Higher Education**  
MBA (Agri-Business), M.Sc., PGDM

### CONTACT & REGISTRATION

MCAER  
Website:  
[www.mcaer.org](http://www.mcaer.org)

Admission Portal: <https://cetcell.mahacet.org>



Please scan this for the Admission Portal.



# FACULTY OF AGRICULTURAL ENGINEERING

## Engineering the Future of Mechanized Farming!



### 1. ACADEMIC PROGRAM

**Course:** B.Tech. (Agricultural Engineering)

**Duration:** 4 Years (8 Semesters) Professional Degree

**University Network**



MPKV, Rahuri | PDKV, Akola | VNMKV, Parbhani | BSKKV, Dapoli

**College Statistics**



### 2. QUALIFYING EXAMINATIONS

#### I. XII Std. (Science)



- XII Std. (Science) passed (10+2) with PCM or PCMB and English.
- Math deficiency courses possible for non-Biology, except Agri. Engg.



#### II. Entrance Requirement

MHT-CET / JEE in 2026-27 in PCM group (Physics, Chemistry, Maths).

### 3. MAJOR AREAS OF STUDY



**Farm Machinery & Power:**  
Design and maintenance of tractors and farm equipment.



**Irrigation & Drainage:**  
Micro-irrigation and water management.



**Soil & Water Conservation:**  
Watershed management and erosion control.



**Renewable Energy:**  
Solar, wind, and bio-energy.



**Agricultural Process Engg.**  
Post-harvest technology and food processing.

### 4. ADMISSION CRITERIA & MARKS

General Category	Reserved Categories	Merit Calculation
 Minimum 45% aggregate	(SC/ST/VJ/NT/OBC/SBC) Minimum 40% aggregate	Based on Entrance Exam (PCM) scores + Additional Weightage (7/12, NCC, Sports, etc.)

### 5. CAREER OPPORTUNITIES



**Government**  
Agricultural Engineer,  
Soil Conservation Officer



**Corporate**  
R&D and Production in Tractor, Tool, and Irrigation companies



**Consultancy**  
Design of high-tech polyhouses and automation systems



**Entrepreneurship**  
Farm service centers and agro-processing units

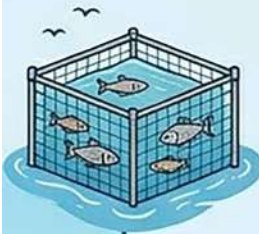
### CONTACT & REGISTRATION

MCAER  
Website:  
[www.mcaer.org](http://www.mcaer.org)

**Admission Portal: [cetcell.mahacet.org](http://cetcell.mahacet.org)**



Please scan this for the Admission Portal.



# FACULTY OF FISHERIES

## Sustainable Blue Revolution!



### 1. ACADEMIC PROGRAM

**Course:** B.F. Sc. (Fishery Science)

**Duration:** 4 Years (8 Semesters) Professional Degree

**University Network**



DBSKKV, Dapoli

**College Statistics**



### 2. QUALIFYING EXAMINATIONS



#### I. XII Std. (Science)

- XII Std. (Science) passed (10+2) with PCB/PCMB/Inter (Agri).
- Math deficiency courses possible.
- Passed with English.



#### II. Entrance Requirement

MHT-CET / NEET in 2026-27 (PCB only)

### 3. MAJOR AREAS OF STUDY



**Aquaculture and Fish Farming**



**Fish Genetics & Biotechnology**



**Fish Nutrition and Feed Technology**



**Aquatic Animal Health Management**



**Fish Processing Technology**



**Fisheries Extension, Economics & Statistics**  
**Aquatic Environment Management**

### 4. ADMISSION CRITERIA & MARKS

**General Category**

Minimum 45% aggregate

**Reserved Categories**

(SC/ST/VJ/NT/OBC/SBC)  
Minimum 40% aggregate

**Merit Calculation**

Based on Entrance Exam (PCB) scores + Additional Weightage (7/12, NCC, Sports, etc.)

### 5. CAREER OPPORTUNITIES



**Government**  
(FDO, ACF)



**Corporate**  
Modern seafood processing plant



**Consultancy & Entrepreneurship**



**Banking**  
Field officer

### CONTACT & REGISTRATION

MCAER  
Website:  
[www.mcaer.org](http://www.mcaer.org)

**Admission Portal: [cetcell.mahacet.org](http://cetcell.mahacet.org)**



Please scan this for the Admission Portal.



# FACULTY OF AGRICULTURE

Shape the Future of Sustainable Farming!



## 1. ACADEMIC PROGRAM

**Course:** B.Sc. (Honours) Agriculture

**Duration:** 4 Years (8 Semesters) Professional Degree

**University Network**



MPKV, Rahuri



PDKV, Akola



VNMKV, Parbhani



BSKVV, Dapoli

**College Statistics**



Government / Aided Colleges: 25



Non-Grant (On Permanent Basis) Colleges: 91

## 2. QUALIFYING EXAMINATIONS



### I. XII Std. (Science)

Passed in 10+2 pattern from Maharashtra State Board with PCB/PCMB/PCM or Inter (Agriculture). Must have English. Biology/Math deficiency courses possible.



### II. Entrance Requirement

Must appear for MHT-CET / JEE / NEET in 2026-27 in PCB or PCM groups.

## 3. MAJOR AREAS OF STUDY

- Agronomy:** Crop Production & Soil Management
- Genetics:** Plant Breeding & Biotechnology
- Plant Protection:** Entomology & Plant Pathology
- Social Sciences:** Agricultural Economics & Extension Education
- Allied Sciences:** Horticulture, Animal Husbandry, Engineering

## 4. ADMISSION CRITERIA & MARKS

General Category	Reserved Categories (SC/ST/NJ/NT/OBC/SBC)	Merit Calculation
Minimum 45% aggregate	Minimum 40% aggregate	Entrance Exam scores + Additional Weightage (7/12, NCC, Sports, etc.)

## 5. CAREER OPPORTUNITIES



### Government

Agriculture Officer (MPSC/UPSC), AO, AAO



### Banking

Agriculture Field Officer (AFO) in Nationalized Banks



### Industry

R&D and Sales in Seed, Fertilizer, Pesticide



### Entrepreneurship

Agri-Clinics, Organic Farming, Tech-Startups

## CONTACT & REGISTRATION

MCAER Website: [www.mcaer.org](http://www.mcaer.org)

Admission Portal: [cetcell.mahacet.org](http://cetcell.mahacet.org)



Please scan this for the Admission Portal.



# FACULTY OF FORESTRY

## Conserve Nature, Engineer a Greener Future!



### 1. ACADEMIC PROGRAM

**Course:** B.Sc. (Honours) Forestry

**Duration:** 4 Years (8 Semesters) Professional Degree

**University Network**



PDKV (Akola)



DBSKKV (Dapoli)

**College Statistics**



Government Colleges: 02



### 2. QUALIFYING EXAMINATIONS



#### I. XII Std. (Science)

- XII Std. (Science) passed (10+2) with PCB/PCMB/Inter (Agri).
- Math deficiency courses possible.
- Passed with English.



#### II. Entrance Requirement

MHT-CET / NEET in 2026-27 (PCB only)

### 3. MAJOR AREAS OF STUDY



**Silviculture**  
Forest establishment, health management.



**Forest Biology**  
Wildlife management, tree genetics



**Forest Products**  
Wood science, timber technology



**Natural Resource Management**  
Watershed, biodiversity

### 4. ADMISSION CRITERIA & MARKS

**General Category**

Minimum 45% aggregate

**Reserved Categories**

Minimum 40% aggregate

**Merit Calculation**

Entrance Exam scores + Additional Weightage (7/12, NCC, Sports, etc.)

### 5. CAREER OPPORTUNITIES



**State Services (RFO/ACF)**  
RFO, ACF (MPSC)



**Research**  
Wildlife Biologist, Forestry Scientist



**Industrial (Wood-based)**  
Wood-based (Paper, Plywood)



**Plantations**  
Rubber, Tea

### CONTACT & REGISTRATION

MCAER Website:  
[www.mcaer.org](http://www.mcaer.org)

**Admission Portal: [cetcell.mahacet.org](http://cetcell.mahacet.org)**



Please scan this for the Admission Portal.

# FACULTY OF FOOD TECHNOLOGY

Transforming Food Through Technology!



## I ACADEMIC PROGRAM



**Course:** B. tech (Food Technology)  
**Duration:** 4 Years (8 Semesters) Professional Degree



**University Network:**



MPKV, Rahuri | PDKV, Akola | VNMKV, Parbhani | BSKKV, Dapoli

**College Statistics:** Government/Aided: 03 | Non Grant (On Permanent Basis) Colleges: 20

## I QUALIFYING EXAMINATIONS (XII STD)



Passed XII Std. (Science) in 10+2 pattern from Maharashtra State Board or equivalent with PCB/PCMB/PCM or Inter (Agri) and English.



- **Mandatory:** English pass.
- Deficiency courses possible for Biology or Math.

## II ENTRANCE REQUIREMENT



Must appear for MHT-CET / JEE / NEET in 2026-27 in PCB or PCM groups.

## 3 MAJOR AREAS OF STUDY



• Food Process Technology.



• Food Chemistry and Nutrition.



• Food Business Management.



• Food Plant Operation.



• Food Microbiology and Safety.



• Food Engineering.

## 4 ADMISSION CRITERIA & MARKS



**General Category**  
Minimum 45% aggregate



**Reserved Categories**  
(SC/ST/VJ/NT/OBC/SBC)  
Minimum 40% aggregate



**Merit Calculation**  
Entrance Exam scores +  
Additional Weightage  
(7/12, NCC, Sports, etc.)

## 5 CAREER OPPORTUNITIES



**Food and Allied Industry.**



**State/Central Government**  
(FSSAI, NABARD, etc.)



**Research and Development**  
(CFTRI, ICAR, etc.)



**Teaching and Academic**  
(NIFTM, ICT, etc.)

MCAER  
Website:  
[www.mcaer.org](http://www.mcaer.org)

## CONTACT & REGISTRATION

Admission Portal: [cetcell.mahacet.org](http://cetcell.mahacet.org)

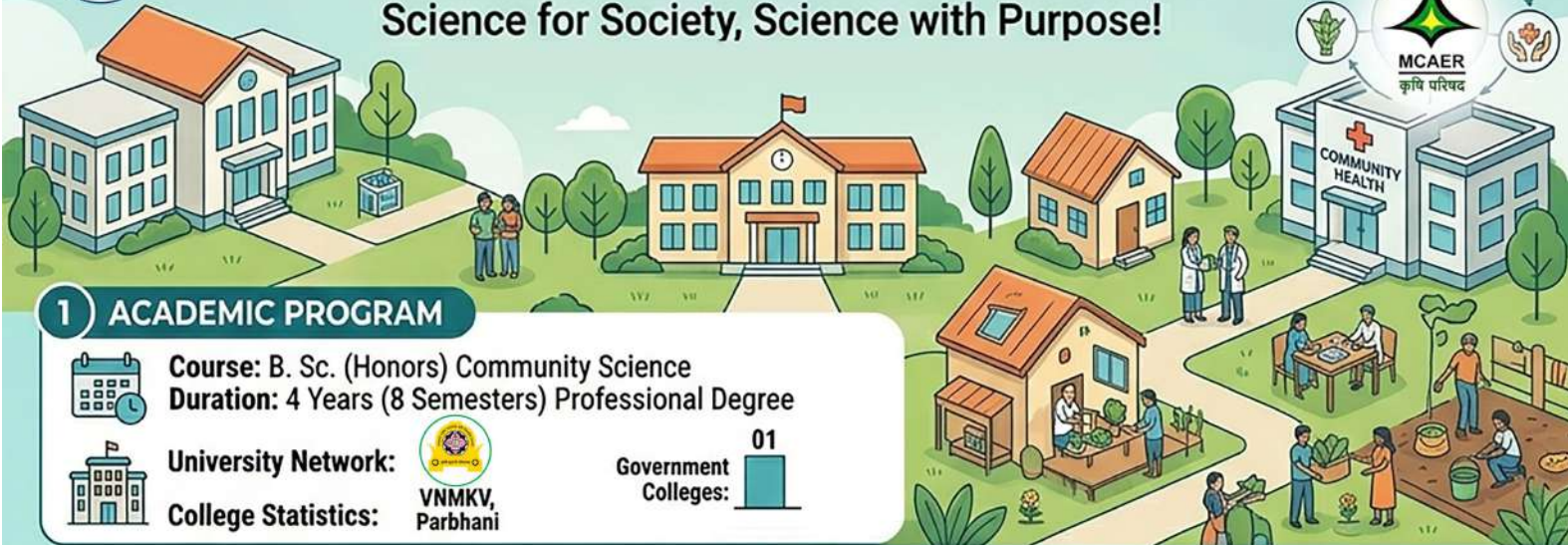


Please scan this for the Admission Portal.



# FACULTY OF COMMUNITY SCIENCE

Science for Society, Science with Purpose!



## I ACADEMIC PROGRAM



**Course:** B. Sc. (Honors) Community Science  
**Duration:** 4 Years (8 Semesters) Professional Degree



**University Network:**



**College Statistics:** VNMKV, Parbhani

**Government Colleges:** 01

## I QUALIFYING EXAMINATIONS (XII STD)



Passed XII Std. (Science) in 10+2 pattern from Maharashtra State Board or equivalent with PCB/PCMB/PCM or Inter (Agri) and English.

- **Mandatory:** English pass.
- Deficiency courses possible for Biology or Math.

## II ENTRANCE REQUIREMENT



Must appear for MHT-CET / JEE / NEET organized by the Competent Authority during 2026-27 in PCB or PCM groups.

## 3 MAJOR AREAS OF STUDY



**Food Science & Nutrition**  
Therapeutic nutrition, preservation, community health



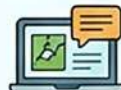
**Human Development**  
Child psychology, family relations, geriatric care



**Resource Management**  
Interior design, consumer economics, sustainable living



**Textiles & Apparel Designing**  
Fiber science, fashion merchandising, garment production



**Extension Education**  
Rural development, communication technologies

## 4 ADMISSION CRITERIA & MARKS



**General Category**  
Minimum 45% aggregate



**Reserved Categories (SC/ST/VJ/NT/OBC/SBC)**  
Minimum 40% aggregate



**Merit Calculation**  
Based on Entrance Exam scores + Additional Weightage (7/12, NCC, Sports, etc.)

## 5 CAREER OPPORTUNITIES



**Healthcare**  
Nutritionist/Dietician in hospitals, wellness centers, sports academies



**Industry**  
Quality Control in Food & Textile industries; Product Designer



**Public Sector**  
Child Development Project Officer (CDPO), Food Safety Officer



**Development**  
Program Officers in NGOs (ONICE7, CARS) and Rural Extension



**Entrepreneurship**  
Fashion boutiques, interior consultancy, specialized catering units

MCAER Website: [www.mcaer.org](http://www.mcaer.org)



## CONTACT & REGISTRATION

Admission Portal: [cetcell.mahacet.org](http://cetcell.mahacet.org)





# FACULTY OF HORTICULTURE

Expertise in Fruits, Flowers, and High-Value Crops!



## I ACADEMIC PROGRAM

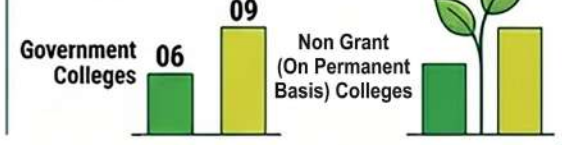


**Course: B.Sc. (Honours) Horticulture**  
**Duration: 4 Years (8 Semesters) Professional Degree**

**University Network:**



### College Statistics:



## II QUALIFYING EXAMINATIONS (XII STD)

XII Std. (Science) passed in 10+2 pattern from Maharashtra State Board or equivalent with PCB/PCMB/PCM or Inter (Agri) and English.

- **Mandatory:** English pass.
- Deficiency courses possible for Biology or Math.

## II. ENTRANCE REQUIREMENT



Must appear for MHT-CET / JEE / NEET in 2026-27 organized by the Competent Authority in PCB or PCM groups.

## 3 MAJOR AREAS OF STUDY



**Fruit Science (Pomology)**  
High-tech production



**Floriculture & Landscaping**  
Commercial farming & design

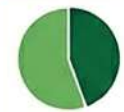


**Vegetable Science**  
Olericulture & greenhouse

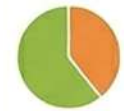


**Post-Harvest Management**  
Value addition & preservation

## 4 ADMISSION CRITERIA & MARKS



**General Category**  
45% aggregate in HSC



**Reserved Categories**  
40% aggregate in Reserved



**Merit Calculation**  
Entrance Exam scores + Additional Weightage (7/12, NCC, Sports, etc.)

## 5 CAREER OPPORTUNITIES



**Public Sector**  
Horticulture Officer, District H.O.



**Private Sector**  
Production Manager, Export houses



**Entrepreneurship**  
Commercial Nurseries, Landscape Consultancy, Tissue Culture Labs



**Higher Education**  
M.Sc. Horticulture, MBA, PhD.

MCAER Website: [www.mcaer.org](http://www.mcaer.org)

## CONTACT & REGISTRATION

Admission Portal: [cetcell.mahacet.org](http://cetcell.mahacet.org)





# FACULTY OF BIO-TECHNOLOGY

Where Biology Meets Technology!

## I ACADEMIC PROGRAM



**Course: B. Tech. Bio-Technology**  
**Duration: 4 Years (8 Semesters) Professional Degree**

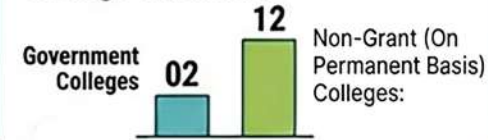


**University Network:**



MPKV, Rahuri | PDKV, Akola | VNMKV, Parbhani | BSKVV, Dapoli

**College Statistics:**



## I QUALIFYING EXAMINATIONS (XII STD)

XII Std. (Science) passed in 10+2 pattern from Maharashtra State Board or equivalent with PCB/PCMB/PCM or Inter (Agri) and English.

- **Mandatory:** English pass.
- Deficiency courses possible for Biology or Math.

## II ENTRANCE REQUIREMENT



Must appear for MHT-CET / JEE / NEET organized by the Competent Authority during 2026-27 in PCB or PCM groups.

## 3 MAJOR AREAS OF STUDY



**Plant Biotechnology & Tissue Culture**



**Microbial & Environmental Biotechnology**



**Bioinformatics & Genomics**



**Animal Biotechnology & Molecular Diagnostics**

## 4 ADMISSION CRITERIA & MARKS



**General Category**  
45% Aggregate in HSC



**Reserved Categories**  
40% Aggregate in Reserved



**Merit Calculation**  
Based on Entrance Exam Scores + weightage (7/12, NCC, Sports, etc.)

## 5 CAREER OPPORTUNITIES



**R&D: Scientist in Vaccine/Seed production** (Biocon, Serum Institute)



**Healthcare**  
Genetic Engineering and Bio-pharma sectors



**Government**  
Quality Control Officer, ICAR Research Assistant



**Startups**  
Forensic Science and Tissue Culture Labs

MCAER Website:  
[www.mcaer.org](http://www.mcaer.org)

## CONTACT & REGISTRATION

Admission Portal: [cetcell.mahacet.org](http://cetcell.mahacet.org)

